



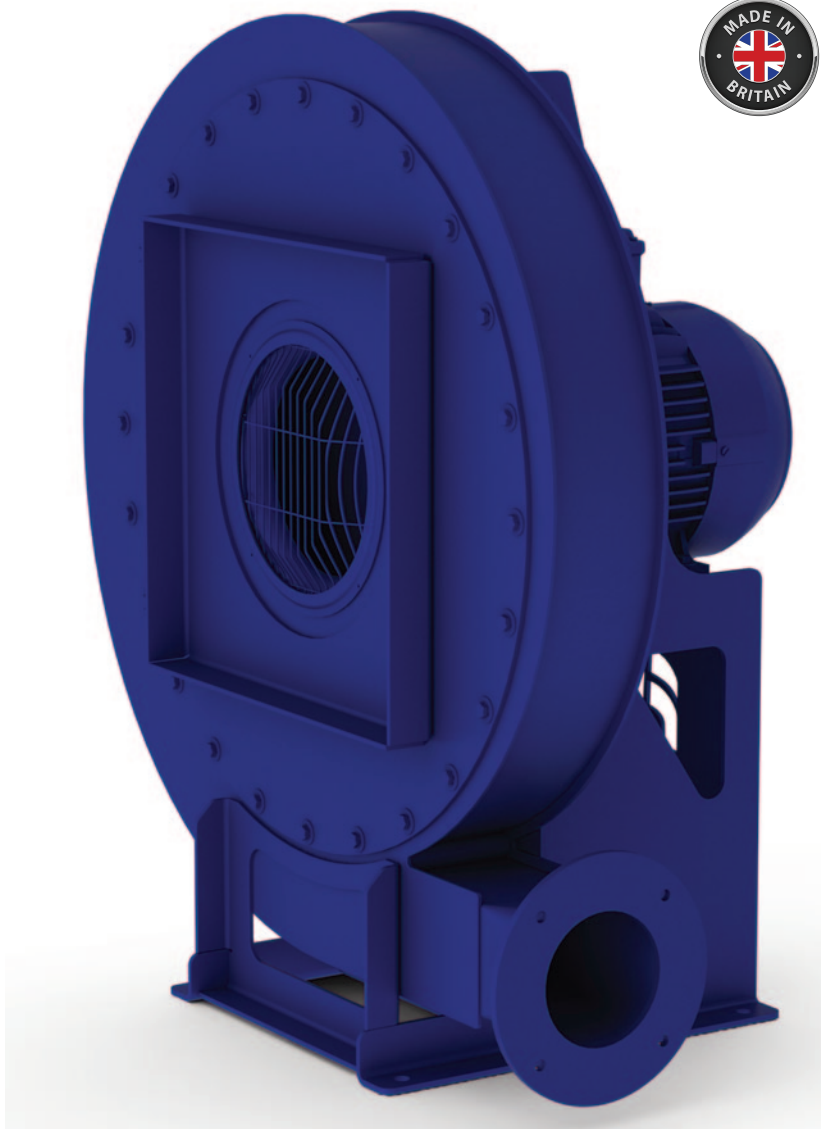
# FANS & BLOWERS

Manufacturers of Industrial Fans for over 50 years

High  
pressure  
applications

## QZ DATA SHEET

### Centrifugal Fan



The QZ range of industrial centrifugal fans is ideal for high pressure applications.

#### KEY FEATURES

- Duties ranging from 0.024m<sup>3</sup>/s - 1.7m<sup>3</sup>/s.
- Range of sizes allows for most industrial needs to be met.

#### TECHNICAL DATA

- Outlet (mm): 50, 65, 75, 100, 125, 150, 200
- Impeller Range (mm): 300 to 900
- 2, 4, 6, 8 pole motors or inverter speed control
- Suitable for 50 / 60 Hz supplies: 1 phase / 3 phase
- Fully Welded Casing / Pedestal and Riveted Impeller
- Double-Skin (insulated) construction available
- Mild, Structural, High Strength or Stainless Steel
- Taper-Lock or Positively Located Welded Hub

#### SPECIFICATIONS

- Available in Left and Right Hand Format
- Various Orientations
- Single or Two Stage Impellers for Pressures up to 34,000Pa
- Standard Paint or Range of Special Finishes
- Standard Motor is IP55; EeXN & EeXD available

#### INDUSTRIES & APPLICATIONS

The QZ range of centrifugal fans can lend itself to a variety of industries and applications. This range can often be seen to support air knives in industries such as **food** and **waste management**. This range also suits combustion air applications in **cremation, incineration, ovens** and kilns. For other and bespoke applications, please get in contact.

#### QZ Centrifugal Fan

#### ANCILLARIES

- Filters
- Silencers
- Flexible Connections
- Spigots
- ANSI flanges
- Anti-Vibration Mounts

#### TESTING & STANDARDS

- Designed and manufactured to ISO 9001:2008 standards.
- Tested to BS 848 / ISO 5801 standards.
- Available in ATEX Zone 1, 2, 21 & 22.
- Ecodesign ErP 2015 Compliant.

Fans & Blowers Ltd  
Commerce Way  
Walrow Industrial Estate  
Highbridge, Somerset, TA9 4AG

T: 01278 784 004  
info@fansandblowers.com  
fansandblowers.com