



# FANS & BLOWERS

Manufacturers of Industrial Fans for over 50 years

**Maximum  
flow at low  
pressures**

## BSZ DATA SHEET

### Centrifugal Fan



**The BSZ range of centrifugal industrial fans are designed for maximum flow at low pressures using backward curved blades.**

#### KEY FEATURES

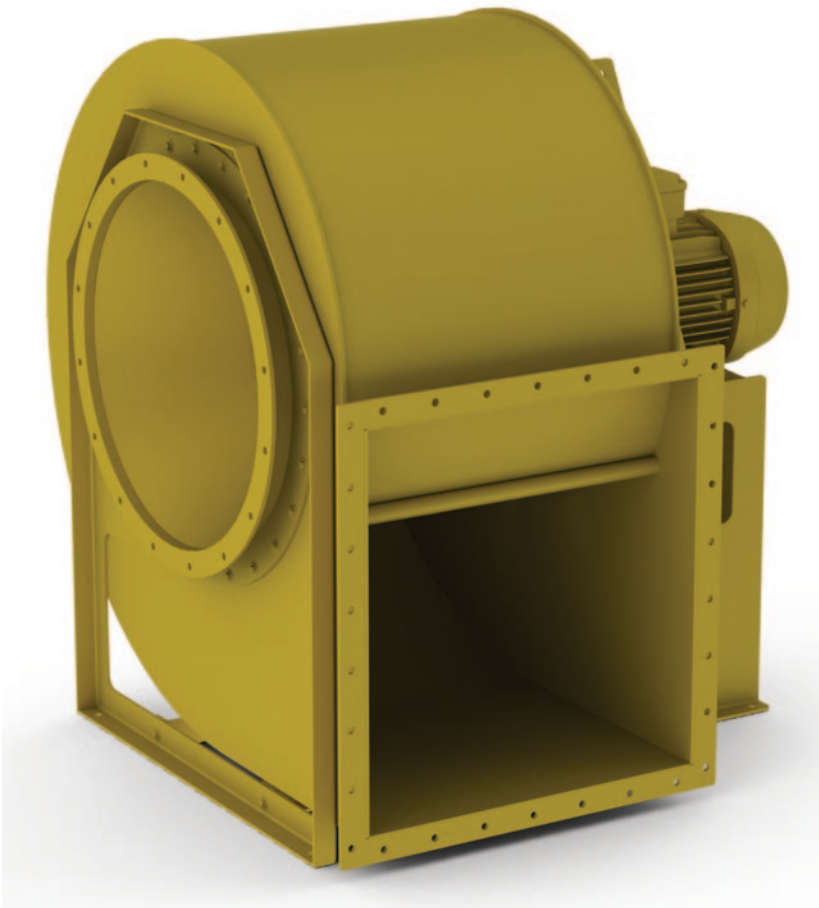
- Duties ranging from 0.47m<sup>3</sup>/s - 27m<sup>3</sup>/s.
- Four standard widths combined with impeller diameters of 400mm-1200mm.
- Suitable for clean air applications up to 300 deg c.

#### SPECIFICATIONS

- Backward straight blades for maximum flow at low pressures
- Available in single inlet single width (SISW) and double inlet double width (DIDW)
- All available in left and right hand format and various orientations
- Standard paint or a range of special finishes

#### INDUSTRIES & APPLICATIONS

The BSZ range is commonly used for applications such as **ventilation**, spray booths, heat exchangers and low pressure **combustion** across a variety of industries.



### BSZ Centrifugal Fan

Fans & Blowers Ltd  
Commerce Way  
Walrow Industrial Estate  
Highbridge, Somerset, TA9 4AG

T: 01278 784 004  
[info@fansandblowers.com](mailto:info@fansandblowers.com)  
[fansandblowers.com](http://fansandblowers.com)

#### ANCILLARIES

- Filters
- Silencers
- Flexible Connections
- Spigots
- ANSI flanges
- Anti-Vibration Mounts

#### TESTING & STANDARDS

- Designed and manufactured to ISO 9001:2008 standards.
- Tested to BS 848 / ISO 5801 standards.
- Eco design ErP 2015 compliant